

1.800.893.8299

HOLSTEINPARTS.COM

PRODUCT CATALOG

**HOLSTEIN**

· PARTS ·

**PARTS THAT PERFORM.  
SERVICE THAT DELIVERS.**





**TAB**  
**CON**

**HOLS**



TABLE OF CONTENTS

4	About Holstein	24	Blower Motor Resistors
6	Features & Benefits	26	Knock Sensors
8	Innovative Packaging	28	Vehicle Speed Sensors
10	Shipping & Marketing	30	Variable Valve Timing Solenoids
12	Customer Stocking Recommendation & Inventory Gap Analysis	32	Coolant Temp Sensors
14	Our Products	34	Manifold Absolute Pressure Sensors
16	ABS Wheel Speed Sensors	36	Throttle Position Sensors
18	Brake Wear Sensors	38	Oil Pressure Sensors
20	Camshaft Position Sensors	40	Idle Air Control Valves
22	Crankshaft Position Sensors	42	Parking Aid Sensors



ABOUT HOLSTEIN

# IMPECCABLE SERVICE, GROUNDBREAKING INNOVATION.





# HOLSTEIN BRINGS TOGETHER THE RELENTLESS PURSUIT OF EXPERT CRAFTSMANSHIP WITH CONTINUOUS TECHNOLOGICAL INNOVATION.

As new challenges arise, our team meets them head-on with cutting-edge engineering and rigid standards to build the right solution, the right way. We go far beyond building top-performing products by delivering for our trusted partners with exceptional service and support.

Our team of highly-trained professionals and auto-enthusiasts work side by side with our partners to find the perfect fit with speed and efficiency. We keep things simple, straightforward, and transparent every step of the way—ensuring that you get what you need, when you need it.

Our team stays one step ahead by not only building what the market demands, but by continually looking to what's next and making sure we're ready with tough and tested solutions, ready to enter the supply chain.

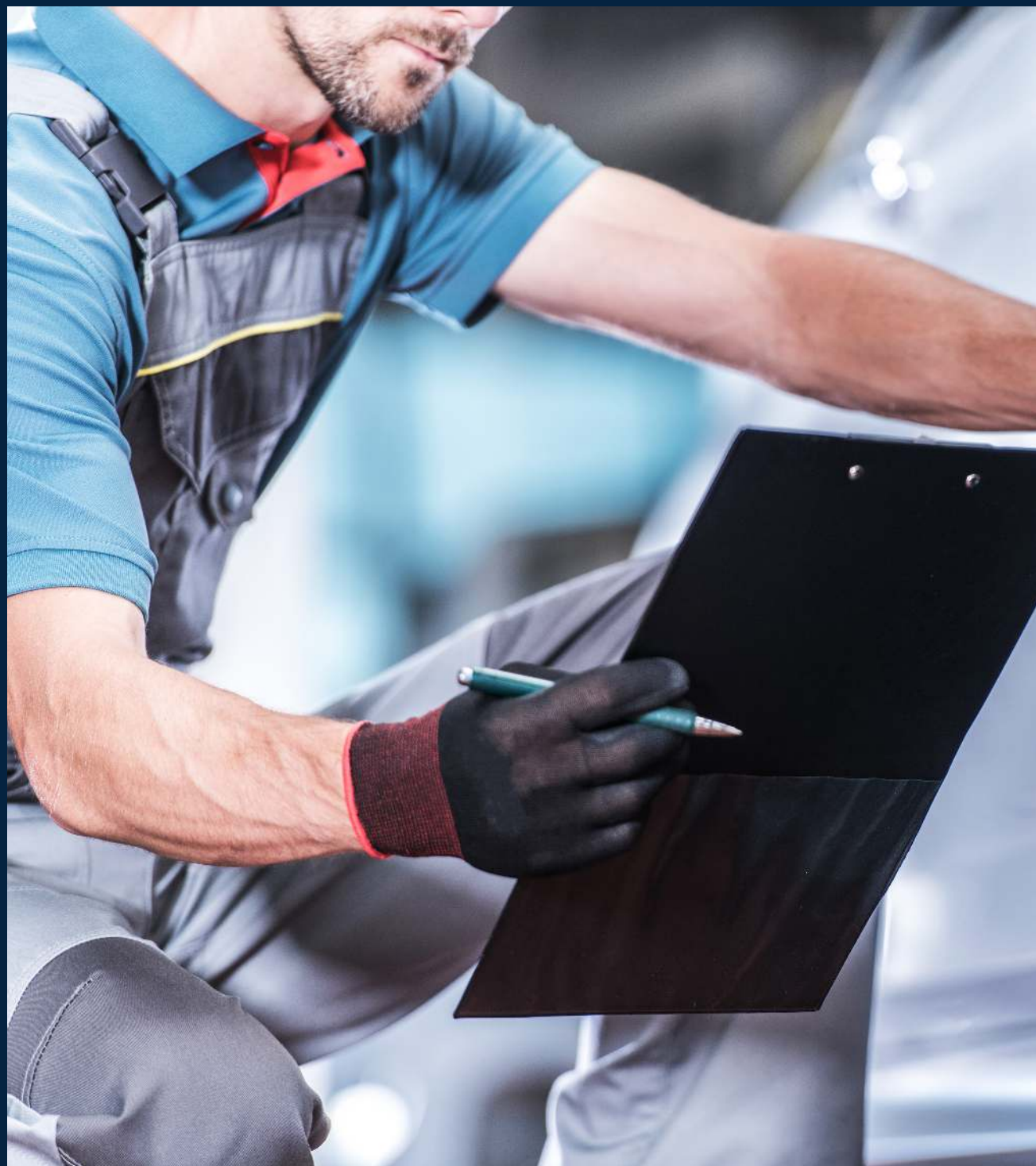
Every Holstein Sensor is built to meet or exceed rigorous OEM specifications and provide exceptional value at every level.

This is Holstein Parts. Parts that perform, service that delivers.





# FEATURES & BENEFITS





## WE ENHANCE THE TRADITION OF QUALITY PRODUCTS WITH EXCEPTIONAL CUSTOMER SERVICE THAT FOCUSES ON GETTING YOU THE PARTS YOU NEED WHEN YOU NEED THEM.

Your Holstein representative is a highly trained professional who will work with you to determine your goals and exactly what you need to achieve them.

- Holstein utilizes only the highest quality materials while manufacturing to exacting OEM quality standards
- All SKU's are cataloged in WHI, Epicor, MAM and are ACES compliant
- Orders are shipped within 48 Hours with an average fill rate of 95%
- Drop Ship Program Available with FTP Inventory Updates
- All Products are packaged in Anti-Static Bags and Labels can be customized to specific customer needs
- Fully EDI Capable
- 3 Year / 36 Month Warranty on all Holstein Sensors
- Less than 1/10th of 1% Warranty Rate across all categories



# INNOVATIVE PACKAGING







**ALL HOLSTEIN PARTS PRODUCTS ARE PACKAGED IN ZIP-LOC STYLE ANTI STATIC BAGS THAT PROTECT THE ELECTRONIC CIRCUITRY AND COMPONENTS AND SUBSTANTIALLY REDUCE THE AMOUNT OF SPACE NEEDED TO WAREHOUSE THE PRODUCT.**

We also offer custom labeling options whereby we are able to print your internal part number or a competitor's cross number on the label, to allow for a smoother transition to Holstein Parts.



**5 Sensors  
in Competitors  
Packaging vs.  
5 Each of the Same  
Sensor in Our  
Packaging**





# SHIPPING



Holstein Parts offers an expedited Drop Ship Program with no Drop Ship fee or minimum order quantity. Inventory checks and orders can be placed by email, phone call or using Gcommerce VIC program.

We ship using every major carrier to ensure your Daily Drop Ship needs are met.

## SHIPPING DETAILS

1-2 days for \$26.95

2-3 days for \$8.00



# NEED MARKETING MATERIALS?

## HOW TO ORDER

✉ info@holsteinparts.com

☎ 800.893.8299

HOLSTEINPARTS.COM 1.800.893.8299

**ABOUT HOLSTEIN**

## ABS SENSORS

- Grommets and wire clips are included per Original Equipment specifications to ensure proper mounting and routing within the car chassis
- Sensor housing is made from high quality reinforced plastic, offering superior resistance to the elements.
- OE connectors and terminals made from premium material are used to ensure an accurate, water-tight connection to the engine wire harness
- Wire harness comes with protective sleeve to prevent wires from damage

**ABOUT THE PRODUCT**

Anti-lock Braking, ABS Systems allow the driver to maintain control of the car in an emergency braking situation. The ABS system relies on sensors to monitor the speed of the wheel and communicate with the ABS computer to ensure ideal performance. The data from the ABS sensor allows the computer to balance the speed of each wheel to prevent the brakes from locking up and avoiding dangerous skidding situations.

- Holstein focuses on using only the highest quality materials, manufactured to exacting standards for an aftermarket product that is truly built to match or exceed the OE part
- Holstein ABS sensor line has superior coverage for domestic and import applications
- Over 2100 ABS numbers available covering 93% of the North American market.
- 3 Year / 36,000 Mile Warranty on Holstein Parts ABS Sensors

**HOLSTEIN**

• PARTS •

2615 S. HWY 95A  
Cantonment, FL 32533

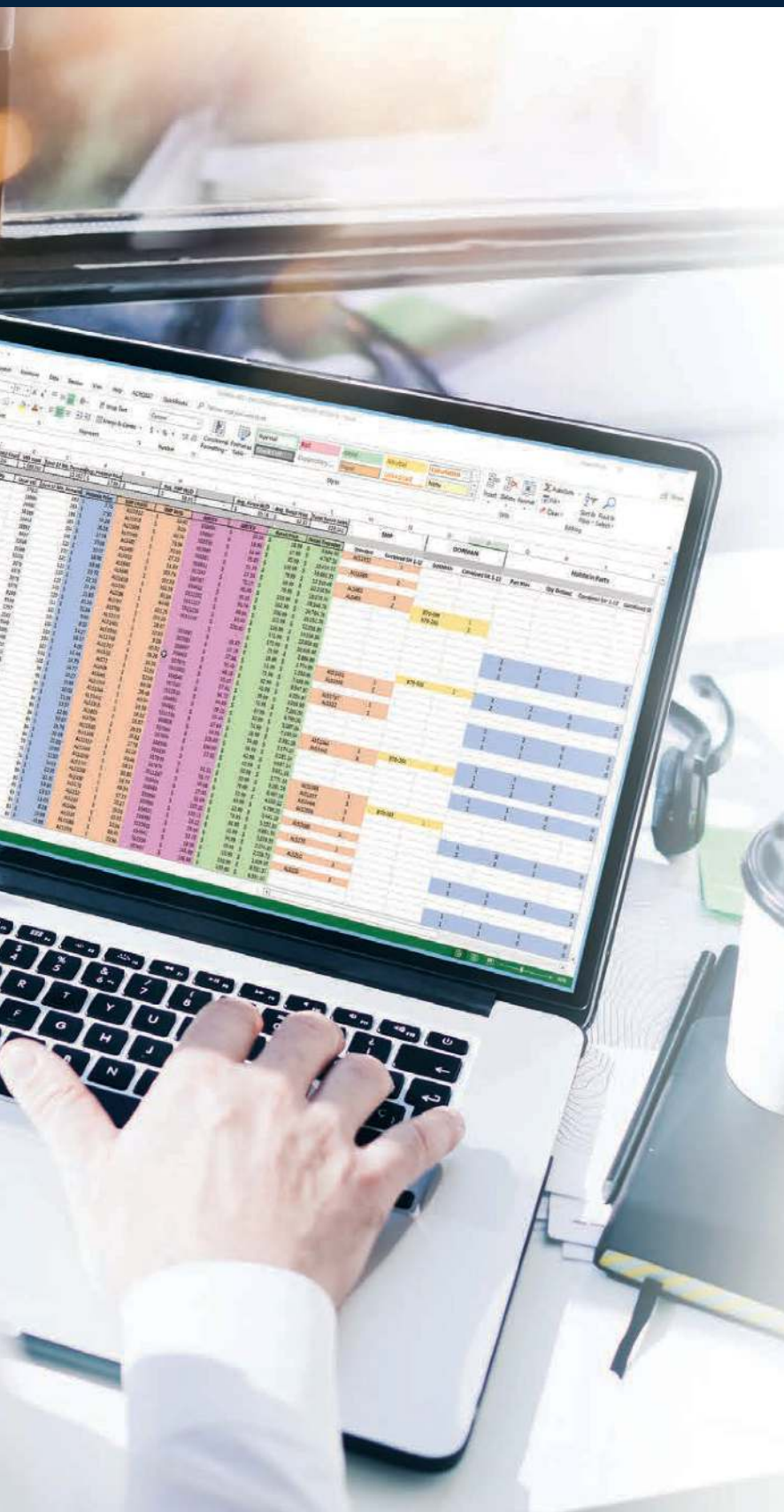
Phone: 1.800.893.8299  
Fax: 850.610.7433





# CUSTOMER STOCKING RECOMMENDATION AND INVENTORY GAP ANALYSIS





Holstein's Team utilizes a system which tracks actual parts sold across all manufacturers and then ties it back to the OE number and then to our part number to give you a stocking recommendation based on your actual market area. We can then cross in your existing inventory and sales numbers creating a GAP Report that shows you exactly where you may be missing out on sales.

- Customized sales data based on a view as large as the US or Canada or as small as a specific zip code
- No generic POP Codes - We show you what is failing in your own backyard
- Competitor Crosses listed to show you how much we can save you per part or across entire category





## OUR PRODUCTS

# BUILT TO THE HIGHEST OF STANDARDS.

Holstein uses the highest quality materials to build each product to exacting OEM standards.

**ABS WHEEL SPEED SENSORS  
& WIRE HARNESS**



☒ 1.1 Billion VIO Covered

**BRAKE WEAR SENSORS**



☒ 35 Million VIO Covered

**CAMSHAFT POSITION SENSORS**



☒ 510 Million VIO Covered

**CRANKSHAFT POSITION SENSORS**



☒ 480 Million VIO Covered

**VEHICLE SPEED  
SENSORS**



**BLOWER MOTOR  
RESISTORS**



☒ 130 Million VIO Covered

**KNOCK SENSORS**



☒ 80 Million VIO Covered

**VARIABLE VALVE  
TIMING SOLENOIDS**



☒ 138 Million VIO Covered

**COOLANT TEMP  
SENSORS**



**IDLE AIR CONTROL  
VALVES**



**MANIFOLD ABSOLUTE  
PRESSURE SENSORS**



**THROTTLE POSITION  
SENSORS**



**OIL PRESSURE  
SENSORS**



**PARKING AID  
SENSORS**







# ABS WHEEL SPEED SENSORS & WIRE HARNESS



## ANTI-LOCK BRAKING, ABS SYSTEMS ALLOW THE DRIVER TO MAINTAIN CONTROL OF THE CAR IN AN EMERGENCY BRAKING SITUATION.

The ABS system relies on sensors to monitor the speed of the wheel and communicate with the ABS computer to ensure ideal performance. The data from the ABS sensor allows the computer to balance the speed of each wheel to prevent the brakes from locking up and avoiding dangerous skidding situations.

### PRODUCT DETAILS

- Holstein focuses on using only the highest quality materials, manufactured to exacting standards for an aftermarket product that is truly built to match or exceed the OE part
- Holstein ABS sensor line has superior coverage for domestic and import applications
- Over 2,300 ABS numbers available covering 93% of the North American Market
- 3 Year / 36,000 Mile Warranty on Holstein Parts ABS Sensors





# BRAKE WEAR SENSORS



## **BRAKE WEAR SENSORS ARE USED TO WARN THE DRIVER OF A VEHICLE THAT THE BRAKE PADS ARE IN NEED OF REPLACEMENT.**

Brake Wear Sensors are installed into a vehicles brake pads and wired into the vehicles notification system. When the brake pads wear to the predetermined level the driver is notified that it is time to have the brake pads and wear sensors replaced. Brake Wear Sensors have been historically used on European Imports and more recently on higher end Asian and Domestic Models.

### **PRODUCT DETAILS**

- Holstein Brake Wear Sensors are manufactured utilizing the highest-quality reinforced plastics able to withstand temperatures up to 400°C
- With more than 300 part numbers covering over 99% of applications throughout North America, Holstein Parts is sure to have the sensor you need when you need it
- 3 Year / 36,000 Mile Warranty on Holstein Brake Wear Sensors





# CAMSHAFT POSITION SENSORS



## THE CAMSHAFT POSITION SENSOR MONITORS THE ROTATING POSITION OF THE CAMSHAFT RELATIVE TO THE CRANKSHAFT POSITION.

This data is sent to the vehicles ECU where it is used to adjust the spark timing and the operation of the fuel injectors. There are two types of Camshaft Sensors, Magnetic and Hall-effect.

The Magnetic type produces its own AC (alternate current) signal (a sine wave), and you can identify it by its two wires. The Hall-effect type uses an external power source to produce a digital signal (a "square wave," on-or-off) and has three wires.

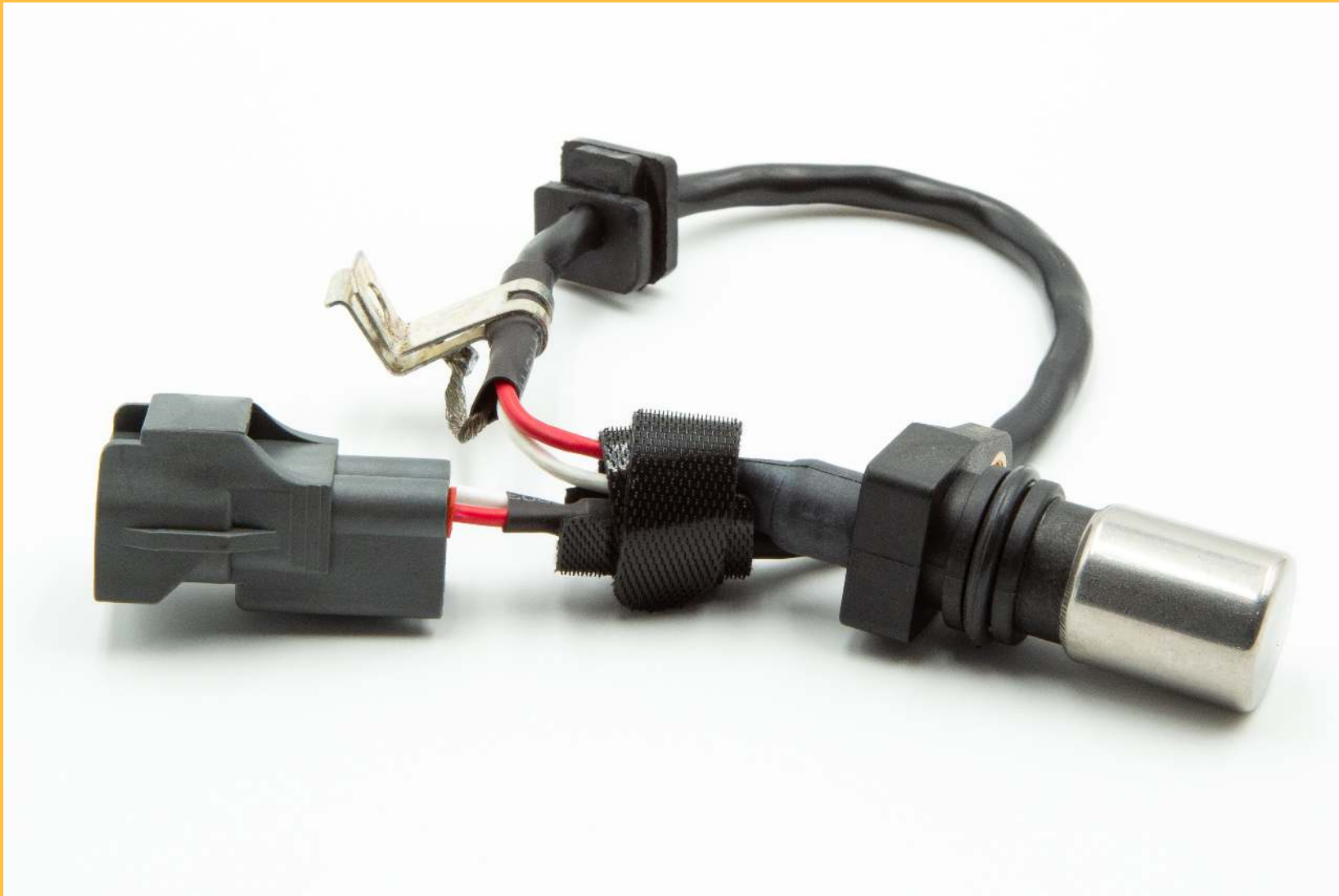
For the engine to operate properly, the rates of the crankshaft and the camshaft need to be in sync with each other.

### PRODUCT DETAILS

- Holstein focuses on using only the highest quality materials, manufactured to exacting standards for an aftermarket product that is truly built to match or exceed the OE part
- Holstein Camshaft Position Sensor line has superior coverage for domestic and import applications
- More than 240 SKUs covering 98% of the North American Market
- 3 Year / 36,000 mile warranty on all Holstein Camshaft Position Sensors



# CRANKSHAFT POSITION SENSORS



## THE CRANKSHAFT POSITION SENSOR IS AN ELECTRONIC DEVICE THAT MONITORS THE POSITION AND/OR ROTATIONAL SPEED OF THE CRANKSHAFT.

This sensor communicates with the vehicle's ECU to control ignition timing and fuel injection parameters. Crankshaft Position Sensors work in conjunction with the Camshaft Position Sensor to monitor the position of the valves and pistons. The Crankshaft Position Sensor also measures engine speed in revolutions per minute.

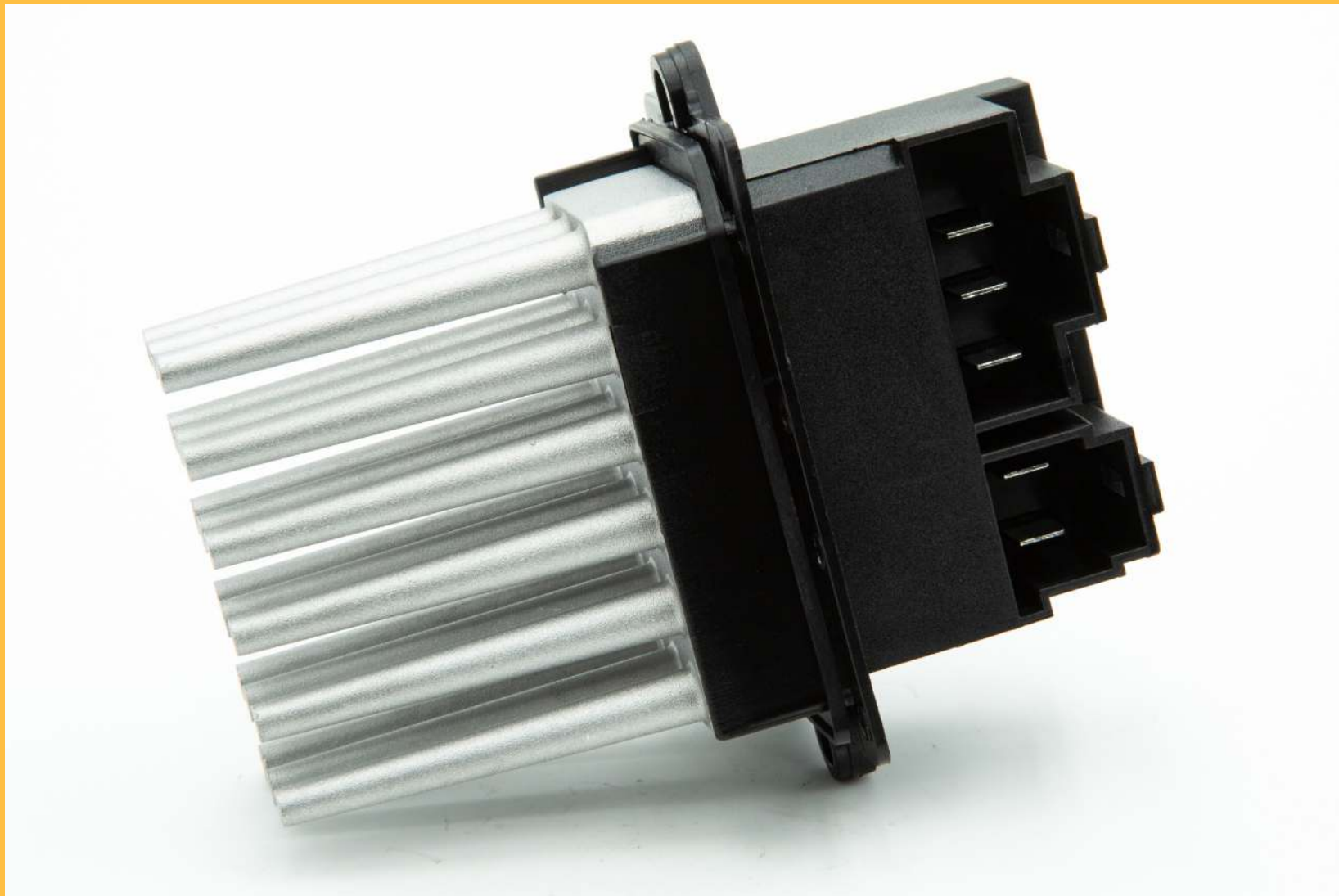
### PRODUCT DETAILS

- Holstein focuses on using only the highest quality materials, manufactured to exacting standards for an aftermarket product that is truly built to match or exceed the OE part
- Holstein Crankshaft Position Sensor line has superior coverage for domestic and import applications
- More than 320 SKUs covering 98% of the North American Market
- 3 year / 36,000 Mile Warranty on all Holstein Crankshaft Position Sensors





# BLOWER MOTOR RESISTORS



## THE BLOWER MOTOR RESISTOR IS AN ELECTRICAL COMPONENT THAT IS A PART OF THE VEHICLE'S INTERIOR HEATING AND AIR CONDITIONING SYSTEM.

It is responsible for controlling the blower motor's fan speed. When the fan speed is changed via the dash controls the blower motor resistor is what changes the speed of the blower motor.

A failed blower motor resistor can cause issues with the operation of the entire heating and air conditioning system. Usually a bad or failing blower motor resistor will produce a few symptoms that can alert the driver of a potential issue.

### PRODUCT DETAILS

- Holstein uses only the highest quality materials and engineering for parts that are truly built to match or exceed the OE part
- Holstein Blower Motor Resistors offer superior coverage for domestic and import applications
- Year / 36,000 Mile Warranty on all Holstein Parts Blower Motor Resistors





# KNOCK SENSORS



## THE KNOCK SENSOR IS ABLE TO DETECT MECHANICAL STRESS AND PRODUCES A VOLTAGE WHEN THE CAR KNOCKS OR PINGS.

Under heavy acceleration, it sends signals to the ECU and the ECU retards the ignition timing to compensate for the knocking, which in effect protects the pistons and rings from damage

Knocking also occurs when using low-grade fuel and having the knock sensor allows you to use different grade fuels without causing engine damage.

### PRODUCT DETAILS

- Holstein utilizes only premium materials to ensure durability and reliable service
- Global coverage of European, Asian, and Domestic vehicles
- Tested to ensure voltage specifications align with OE standards
- 3 Year / 36,000 Mile Warranty on all Holstein Knock Sensors





# VEHICLE SPEED SENSORS



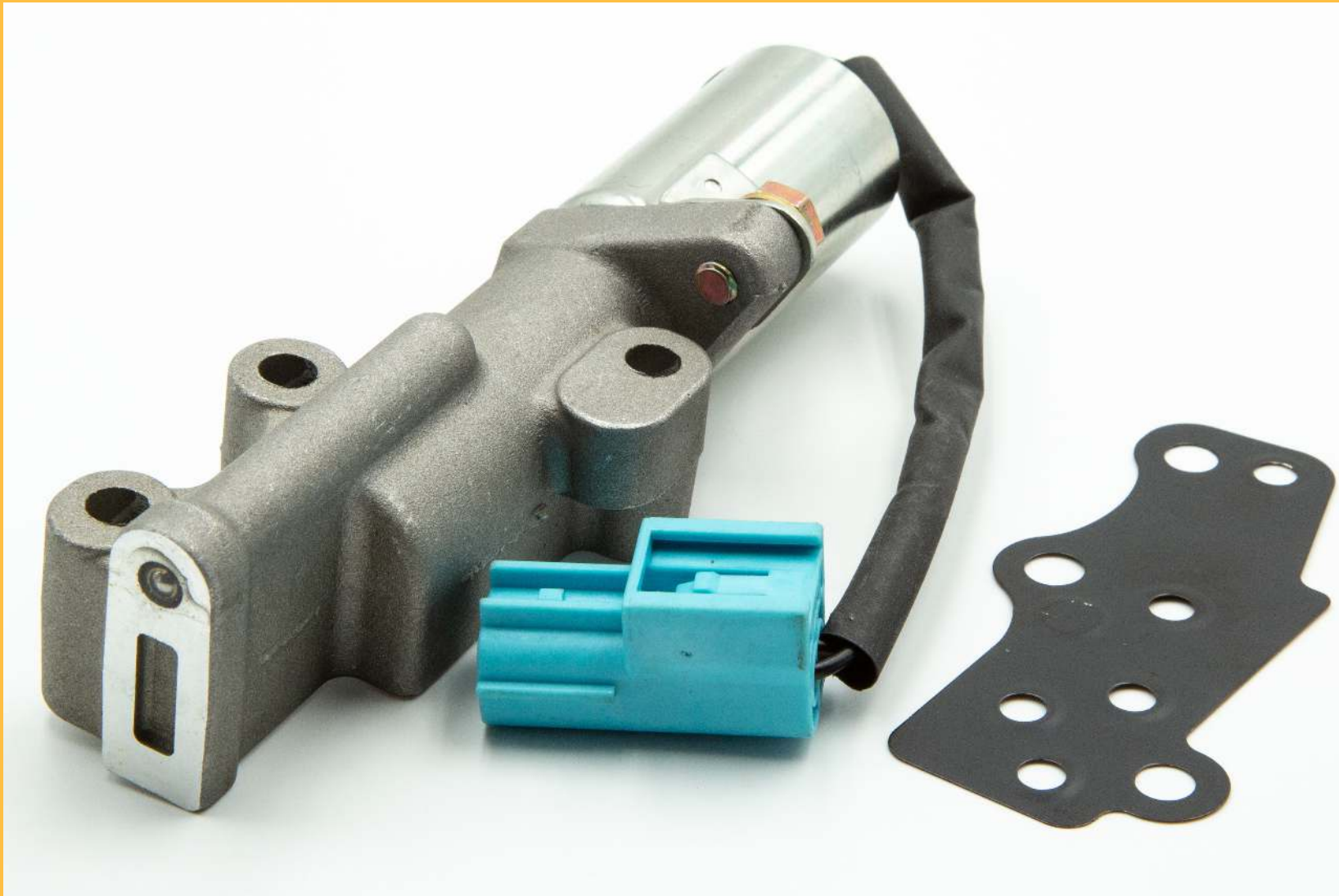
## VEHICLE SPEED SENSORS MEASURE WHEEL SPEEDS AND PROVIDE THIS INFORMATION TO THE VEHICLE'S ECU (ELECTRONIC CONTROL UNIT).

The ECU then calculates ignition timing, transmission shift points and air/fuel ratios for the vehicle. Data from the Vehicle Speed Sensor is also used in cruise control systems to maintain a constant speed.

### PRODUCT DETAILS

- Holstein utilizes only premium materials to ensure durability and reliable service
- All Holstein Vehicle Speed Sensors are rigorously tested to meet or exceed manufacturer's requirements for OE parts.
- Wide Market Coverage for European, Asian, and Domestic Vehicles
- 3 Years / 36,000 Mile Warranty on Holstein Vehicle Speed Sensors

# VARIABLE VALVE TIMING SOLENOIDS





## THE VARIABLE VALVE TIMING SOLENOID ALTERS THE SUPPLY OF OIL PRESSURE TO THE CAMSHAFT DEPENDING ON THE SPEED AND LOAD OF THE ENGINE.

The Variable Valve Timing Solenoid can either advance or retard cam position which provides several benefits, including improved engine operation, increased engine power reduced fuel consumption and decreased emissions.

### PRODUCT DETAILS

- Holstein focuses on using only the highest quality materials, manufactured to exacting standards for an aftermarket product that is truly built to match or exceed the OE part
- Holstein's Variable Valve Timing Solenoid line has superior coverage for domestic and import applications
- More than 190 SKUs covering 97% of the North American Market
- Designed to maximize engine performance and fuel efficiency
- 3 Year / 36,000 Mile Warranty on all Holstein Parts VVT Sensors



# COOLANT TEMP SENSORS



## THE COOLANT TEMPERATURE SENSOR, ALSO KNOWN AS THE COOLANT TEMPERATURE SWITCH, IS AN ENGINE MANAGEMENT SYSTEM SENSOR THAT IS USED TO MONITOR THE TEMPERATURE OF THE ENGINE COOLANT.

Most coolant temperature sensors operate using electrical resistance to measure the temperature of the coolant. This signal is then sent to the electronic control unit (ECU) so that changes can be made to the engine's timing and air/fuel mixture for optimal performance, as engines require more fuel when they are cold, and less fuel when they are fully warmed up.

The computer will also scale back engine performance settings if it detects that the engine temperature is too high, in order to protect the engine from possible damage due to overheating.

Because temperature plays such a vital role in engine performance calculations, a problem with a coolant temp sensor can quickly translate into engine performance issues.

### PRODUCT DETAILS

- Holstein Parts uses only the highest quality materials and engineering for parts that are truly built to match or exceed the OE part
- Holstein Parts Coolant Temp Sensors offer superior coverage for domestic and import applications
- Holstein Parts uses only the highest quality materials, manufactured to exacting standards to provide long term function and performance
- 3 Year / 36,000 Mile Warranty on all Holstein Parts Coolant Temp Sensors





# MANIFOLD ABSOLUTE PRESSURE SENSORS



## THE MANIFOLD ABSOLUTE PRESSURE SENSOR (MAP SENSOR) IS ONE OF THE SENSORS USED IN A VEHICLE'S ELECTRONIC CONTROL SYSTEM (ECU).

Engines that use a MAP sensor are typically fuel injected. The MAP Sensor provides instantaneous manifold pressure information to the engine's computer (ECU).

The data is used to calculate air density and determine the engine's air mass flow rate, which in turn determines the required fuel metering for optimum combustion and influences the advance or retard of the ignition timing.

A faulty Map Sensor can cause a vehicle to run rich or lean which will affect the vehicle's ignition timing and cause the engine not run smoothly.

### PRODUCT DETAILS

- Holstein Parts uses only the highest quality materials and engineering for parts that are truly built to match or exceed the OE part
- Holstein Parts MAP Sensors offer superior coverage for domestic and import applications
- 3 Year / 36,000 Mile Warranty on all Holstein Parts MAP Sensors



# THROTTLE POSITION SENSORS





## THE THROTTLE POSITION SENSOR (TPS) IS USED TO MONITOR HOW FAR THE THROTTLE VALVE (OR BLADE) IS OPEN, WHICH IS DETERMINED BY HOW FAR DOWN THE ACCELERATOR PEDAL HAS BEEN PRESSED.

This information is relayed to the vehicle's engine control unit (ECU) and determines how much air and fuel is entering the engine, which guarantees a smooth-running engine.

When a TPS goes bad the car's throttle body won't function properly. It could either stay shut or it won't close properly which is a severe issue. If it stays shut then your engine is not going to receive air and it won't start.

A worse case scenario is when the throttle body won't close properly causing unwanted acceleration or uncontrolled speed.

### PRODUCT DETAILS

- Holstein Parts uses only the highest quality materials and engineering for parts that are truly built to match or exceed the OE part
- Holstein Parts Throttle Position Sensors offer superior coverage for domestic and import applications
- 3 Year / 36,000 Mile Warranty on all Holstein Parts Throttle Position Sensors



# OIL PRESSURE SENSORS



## THE OIL PRESSURE SENSOR MONITORS THE PERFORMANCE OF THE OIL PUMP AND SENDS THIS INFORMATION TO THE ENGINE CONTROL UNIT (ECU) ON COMPUTER CONTROLLED VEHICLES OR DIRECTLY TO THE OIL PRESSURE GAUGE ON YOUR INSTRUMENT CLUSTER FOR NON (ECU) EQUIPPED VEHICLES.

When lower than normal oil pressure is detected, the pressure sensor sends this info to the (ECU) or makes the gauge in the car reflect this change.

Without the proper amount of oil, your engine will sustain major damage. Multiple systems in your car are designed to maintain the correct engine oil level and pressure.

In order for the engine computer to regulate the flow of oil, the oil pressure sensor needs to work correctly.

### PRODUCT DETAILS

- Holstein Parts uses only the highest quality materials and engineering for parts that are truly built to match or exceed the OE part
- Holstein Parts Oil Pressure Sensors offer superior coverage for domestic and import applications
- 3 Year / 36,000 Mile Warranty on all Holstein Parts Oil Pressure Sensors





# IDLE AIR CONTROL VALVES



## THE IDLE AIR CONTROL VALVE IS AN ELECTRICALLY CONTROLLED DEVICE, WHICH GETS ITS INPUT FROM THE VEHICLE'S ENGINE CONTROL UNIT (ECU).

The actuator is fitted such that it either bypasses the throttle or operates the throttle directly.. The IAC allows the ECU to maintain minimum RPM irrespective of changes in engine load, sometimes referred to as anti-stall feature.

Thus the driver can more easily move the car from stand-still by merely releasing the clutch (manual transmission) or the brake (automatic transmission) without having to simultaneously press the accelerator.

### PRODUCT DETAILS

- Holstein Parts uses only the highest quality materials and engineering for parts that are truly built to match or exceed the OE part
- Holstein Parts Idle Air Control Valves offer superior coverage for domestic and import applications
- 3 Year / 36,000 Mile Warranty on all Holstein Parts Idle Air Control Valves



# PARKING AID SENSORS



## **PARKING AID SENSORS ARE PROXIMITY SENSORS DESIGNED TO ALERT THE DRIVER OF OBSTACLES WHILE PARKING. USING EITHER ELECTROMAGNETIC OR ULTRASONIC SENSORS.**

These systems feature proximity detectors to measure the distances to nearby objects via sensors located in the front and/or rear of the vehicle.

The system in turns warns the driver with acoustic tones indicating object distance, with faster tones indicating closer proximity and a continuous tone indicating a minimal predefined distance.

Systems may also include visual aids, such as LED or LCD readouts to indicate object distance. A vehicle may include a vehicle pictogram on the car's infotainment screen, with a representation of the nearby objects as coloured blocks.

### **PRODUCT DETAILS**

- Holstein Parts uses only the highest quality materials and engineering for parts that are truly built to match or exceed the OE part
- Holstein Parts Parking Aid Sensors offer superior coverage for domestic and import applications
- 3 Year / 36,000 Mile Warranty on all Holstein Parts Parking Aid Sensors





HOLSTEINPARTS.COM

# TO LEARN MORE, VISIT HOLSTEINPARTS.COM

**HOLSTEIN**

• PARTS •

CONTACT US

2615 S. HWY 95A  
Cantonment, FL 32533

Phone: 1.800.893.8299  
Fax: 850.610.7433